

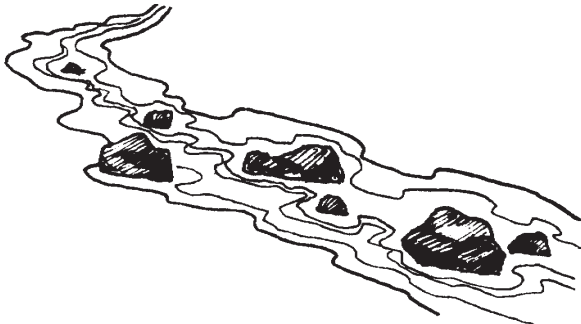
**Wai Card**



**Wai Card**



**Wai Card**



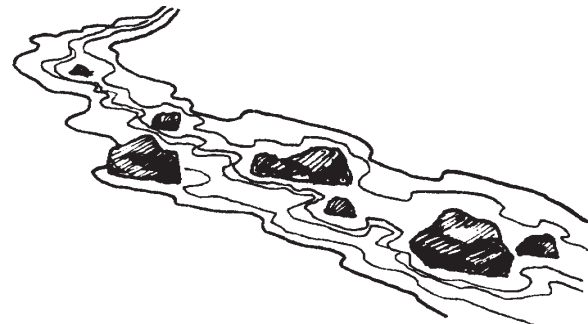
**Wai Card**



**Wai Card**



**Wai Card**



**1**

Who was Hāloa and why is he important in Hawaiian culture?

CHANCE

**4**

What does it mean to say that “the water that flows through the land is like blood that flows through our bodies”?

**2**

Why are the areas where streams flow into the sea good places to fish?

**5**

Name three ways that Hawaiians depended on water from streams.

CHANCE

**3**

How could a farmer attain wealth or *waiwai* in old Hawai‘i?

**6**

What is the major difference between the Hawaiian ‘*auwai* system and the modern system of using stream water for crops?

**7**

Punalu‘u means “diving spring.” How did Hawaiians obtain water from these springs?

CHANCE

**10**

How is *kalo* planted and what does it need to grow?

**8**

How is streamlife affected when large amounts of water are removed from a stream?

CHANCE

**11**

How is *kalo* harvested?

CHANCE

**9**

How are *kalo* farmers affected by the water needs of large modern farms today?

CHANCE

**12**

Name three different areas of an *ahupua‘a* and describe a resource to be found in each area.

**13**

How is *poi* made?

CHANCE

**16**

Where did people living in dry areas obtain their fresh water?

**14**

Name one effect of having more silt or soil added to streams.

**17**

Why do native stream animals need to have streams that flow freely to the sea?

CHANCE

**15**

Why did Hawaiians pound *kalo* to make *poi*?

CHANCE

**18**

What is one reason that so many *kalo* farmers have stopped farming?

**19**

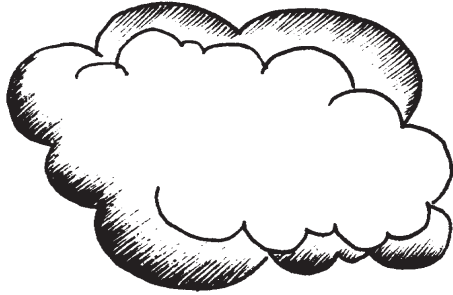
Name one thing people can do to take care of streams today.

CHANCE

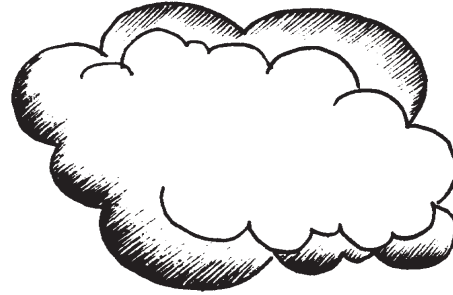
**20**

How does the increase of silt in the stream affect the reef in the ocean?

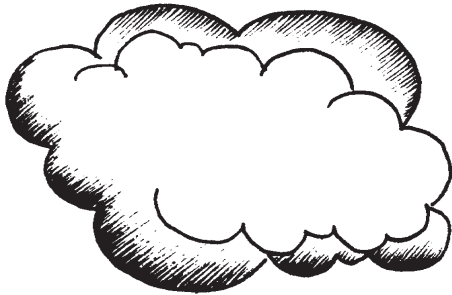
**Chance**



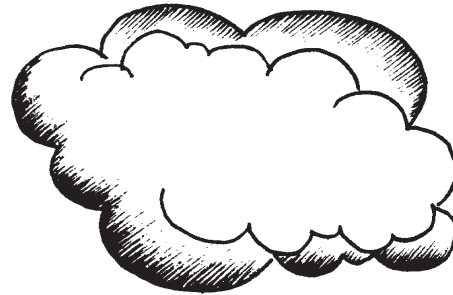
**Chance**



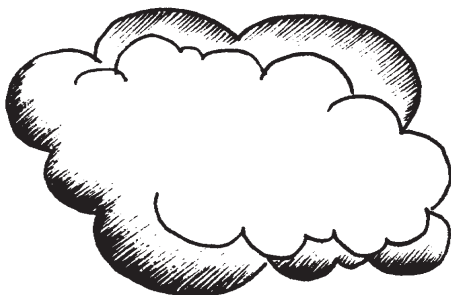
**Chance**



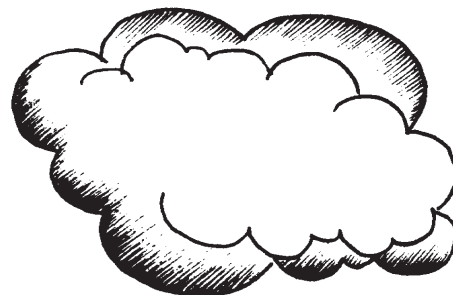
**Chance**



**Chance**



**Chance**



## Wai Ola: The Water of Life

## Chance Cards

A drought causes the water level to drop in the stream. Return one water drop to the *'auwai*.

A landslide fills much of the stream with soil. Return one water drop to the *'auwai*.

Rainfall adds more water to your stream. Take one water drop from the *'auwai*.

You work very hard to help repair the *'auwai* and the *konohiki* gives you more water. Take one water drop from the *'auwai*.

A greedy farmer upstream takes more than his share of water. Return one water drop to the *'auwai*.

Surf is up and your *'ohana* decides to surf instead of take care of the *'auwai*. Return one water drop to the *'auwai*.

## Wai Ola: The Water of Life

## Chance Cards

A long steady rain adds more water to the stream. Take one water drop from the *'auwai*.

You are farming upstream and take more water than the *konohiki* has allowed for your *'ohana*. Take one water drop from the *'ohana* “downstream” on your left.

The men in the family become ill and cannot take care of the *'auwai*. Return two water drops to the *'auwai* and ask other *'ohana* to share some water with you.

You help carry rocks to repair the *'auwai* and the *konohiki* rewards you with more water. Take a water drop from the *'auwai*.